

# FISHWAY STATUS REPORT

Date: 10/30/11

Inspection Period: 10/23 - 10/29/11

## THE DALLES DAM



**US Army Corps  
of Engineers**  
Portland District

The Dalles Project-Fisheries  
P.O. Box 564  
The Dalles, OR 97058-9998  
Phone: 541-506-3800

Fishways are inspected twice daily. Additional daily monitoring done via automation system in fisheries office.

The Dalles Dam	Inspections	Criteria	Total Number of Inspections:	21	Temperature:	59.2	F
	Out of Criteria	Limit	Comments		Secchi:	6.0	Ft.
<b>NORTH FISHWAY</b>							
Exit differential	0	≤ 0.5'					
Count station differential	0	≤ 0.3'					
Weir crest depth	0	1.0' ± 0.1'					
Entrance differential	0	1.0' - 2.0'	Average	1.2	Daily differentials & weir depths, see <b>AVGS</b> tab.		
Entrance weir N1	0	depth (≥ 8')	Average	9.7			
Entrance weir N2		Closed	Bulkhead installed				
PUD Intake differential	1	≤ 0.5'	Trash rack raked on 10/25. 0.6' PUD in by-pass all week. Cooling water failure.				
<b>EAST FISHWAY</b>							
Exit differential	0	≤ 0.5'					
Removable weirs 154-157	0	Per forebay	Auto adjusts 1' increments.				
Weir 158-159 differential	0	1.0' ± 0.1'					
Count station differential	0	≤ 0.3'					
Weir crest depth	0	1.0' ± 0.1'					
Junction pool weir JP6	0	depth (≥ 7')	Manually adjusted as needed.				
East entrance differential	0	1.0' - 2.0'	Average	1.5	Daily differentials & weir depths, see <b>AVGS</b> tab.		
Entrance weir E1	0	No criteria	Average	6.4	Manually adjusted.		
Entrance weir E2	0	depth (≥ 8')	Average	11.3			
Entrance weir E3	0	depth (≥ 8')	Average	11.3			
Collection channel velocity	0	1.5 - 4 fps	Average	2.5	See <b>Velocities</b> tab for more complete information.		
West entrance differential	0	1.0' - 2.0'	Average	1.3			
Entrance weir W1	0	depth (≥ 8')	Average	8.4			
Entrance weir W2	0	depth (≥ 8')	Average	8.4			
Entrance weir W3	0	No criteria	Average	Closed			
South entrance differential	0	1.0' - 2.0'	Average	1.3	Daily differentials & weir depths, see <b>AVGS</b> tab.		
Entrance weir S1	0	depth (≥ 8')	Average	8.3	Manually adjusted.		
Entrance weir S2	0	depth (≥ 8')	Average	8.3			
<b>JUVENILE PASSAGE</b>							
Sluiceway operation	1	units 1,8,18	Sluiceway closed to seal MU3 orifices 10/26 3 hours. Approved through FPP.				
Turbine trashrack drawdown	0	<1.5', wkly	Range:	0.1' - 0.6'			
Spill volume	0	Closed	Closed for fish passage 8/31				
Spill Pattern	0	per FPP	On seal.				
Turbine Unit Priority	0	per FPP					
Turbine 1% Efficiency	0	per FPP					

**OTHER ISSUES:****THE DALLES*****Birds:***

Bird numbers have increased around the project. Primarily gulls, cormorants and grebes. See bird tab below for more information on species, numbers and location. An osprey was found dead at Westrick Park under power lines. Cause of death unknown. Appeared to have a broken wing.

***Operations:***

Calibrations completed 10/29/11. All PLC values are within criteria ( less than 0.3' difference).

Gatewell drawdown completed on 10/29/11. Differentials between the forebay and gatewells ranged from 0.1' - 0.7'.

PUD in by-pass all week due to turbine cooling water line replacement. Bypass operation showed slight increase to intake differential (~0.1')

Tailwater has been low all week due to the Condit Dam removal. Restriction was lifted Thursday 10/27.

Oil boom installed at east and north fishway exits in preparation for John Day Dam oil spill 10/12. The booms were removed 10/24.

The fishway dewatering schedule and task list planning is underway with edits from meeting with maintenance staff.

All fishways are maintaining criteria operation as per Fish Passage Plan (FPP).

The third fishway daily inspections trend taken from the fisheries office SCADA system indicated that all entrances and exits were in criteria from 1700 to 0630 hours.

***Maintenance:***

Structural took down the Ice/trash sluiceway 10/26 for three hours to permanently seal orifices at MU-3 bulkhead slot. Approved through Fish Passage Plan (FPP).

***Studies:***

Adult PIT study project support continues per request.

East fishway backup study project support continues per request. Planning for fish lock pipe clean out and test operation continues.

***Research/Contractors:***

Oregon Department of Fish and Wildlife (ODFW) did their fishway inspection this week.

Inland Avian Predation Management Plan and Environmental Assessment Working Group met 10/25 . Normandeau Associates discussed development plan and NEPA documentation. Benefits analysis presented by Oregon State University (OSU). Anticipated schedule for development of management plan discussed by Normandeau Associates. Corps and Fisheries Field Unit (FFU) activities included habitat and dam component.

Washington Department of Fish and Wildlife (WDFW) fish counters on site through end of October.

Oregon Department of Fish and Wildlife (ODFW) bass angling finished their field activities at the end of August and are currently working on diet sample lab work. The draft report will be completed some time in February. Preliminary analysis of the catch and effort data propose a June to September sample period for next year.

ODFW are planning one more electro-fishing next week of both day and nighttime sampling for The Dalles forebay and tailrace. The work is part of their current effort to understand the role that American shad play in the diets of non-native predators during the autumn (i.e. bass, walleye, and channel catfish).

Approved by;  
Ron D. Twiner  
Operation Project Manager  
The Dalles Dam

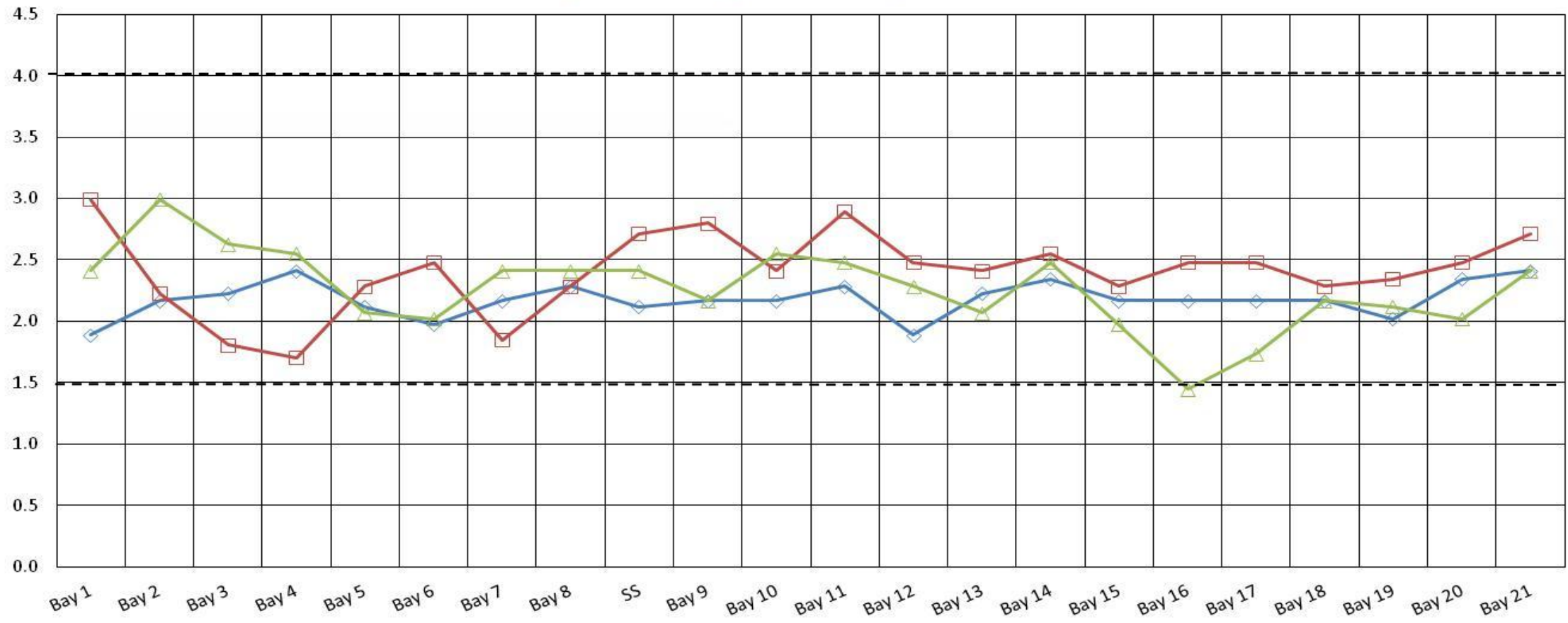
## The Dalles Dam Fish Counts

Date	East	North	East	North	Total	Total	East	North					East	North			East	North	Spill
	Chinook	Chinook	Chinook	Chinook	East	North	Unclipped	Unclipped	East	North	East	North	Coho	Coho	East	North	East	North	Spill
	Adult	Adult	Jack	Jack	Sthd	Sthd	Sthd	Sthd	Sock	Sock	Coho	Coho	Jack	Jack	Lamprey	Lamprey	Pink	Pink	Volume
23-Oct	448	11	82	8	168	29	52	10	0	0	90	24	0	0	0	0	0	0	O N  S E A L
24-Oct	397	16	125	10	195	27	64	4	0	0	144	17	1	0	0	0	0	0	
25-Oct	439	20	126	8	156	18	43	10	0	0	85	5	2	1	0	0	0	0	
26-Oct	205	1	97	2	135	25	52	1	0	0	72	10	4	0	0	0	1	0	
27-Oct	263	5	71	5	122	32	38	7	0	0	140	26	4	0	0	0	0	0	
28-Oct	193	6	71	1	119	20	54	10	0	0	125	16	7	0	0	0	0	0	
29-Oct	203	1	56	4	143	11	64	5	0	0	215	50	20	0	0	0	0	0	
Wkly Tot	2148	60	628	38	1038	162	367	47	0	0	871	148	38	1	0	0	1	0	
% Split	97.3%	2.7%	94.3%	5.7%	86.5%	13.5%	88.6%	11.4%			85.5%	14.5%	97.4%	2.6%			100.0%	0.00%	

Spill range: On seal.

### The Dalles Dam Collection Channel Velocities (fps)

10/22/2011 10/23/2011 10/24/2011



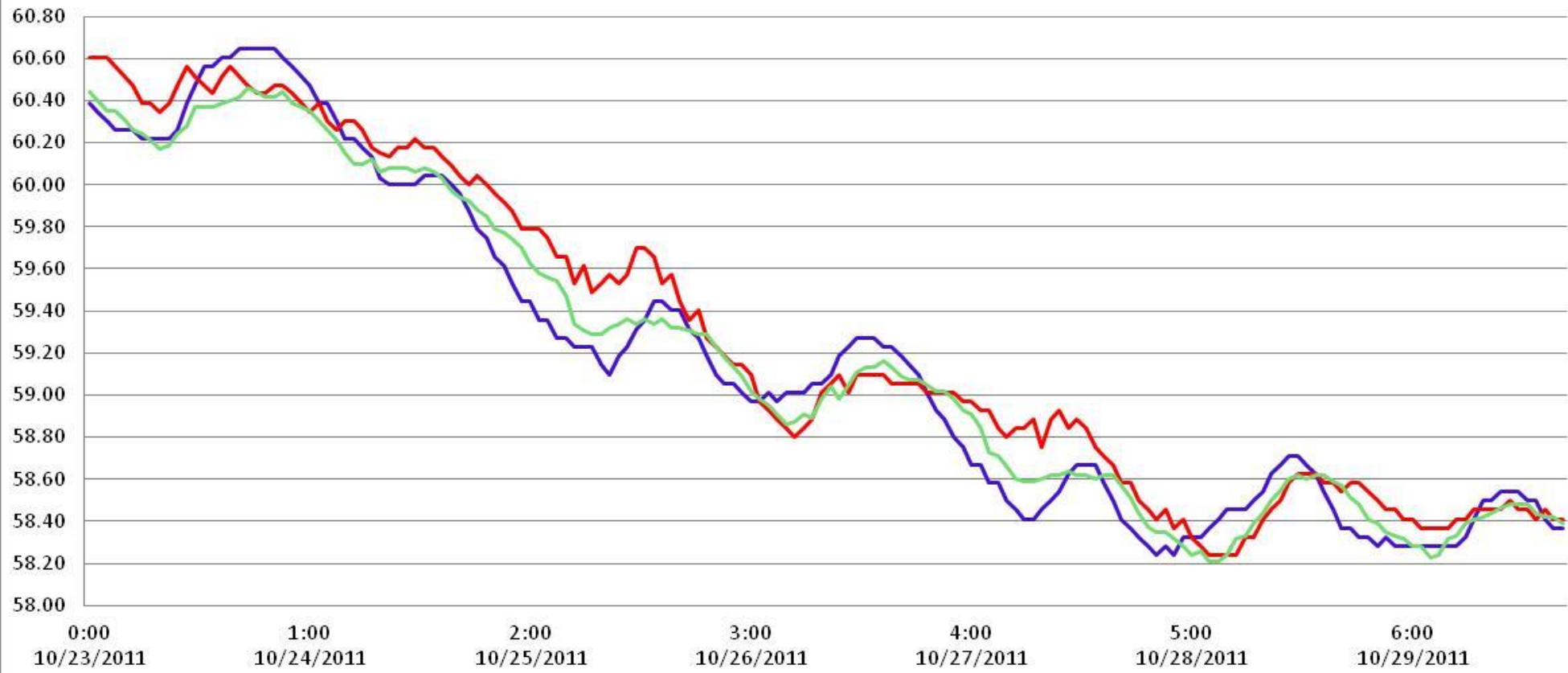
°F

### The Dalles River/Water Temperatures

— East Fish Ladder

— North Fish Ladder

— USGS Tailwater



# The Dalles Dam Maximum Daily Bird Observations

Washington Shore

SW-T1: one cormorant

SW-T3: 61 cormorants and 58 gulls resting on rocks; three active cormorants

SW-T4: one active

FB1: 175 grebes resting on water and 33 cormorants in towers

SW-T2: 31 gulls resting, 25 gulls active, and 16 cormorants resting

PH-T1: 56 mergansers, 38 cormorants, one gull and one heron

PH-T2: 14 mergansers resting on water

PH-T3: 67 gulls active and 23 cormorants resting

Oregon Shore

Temp:			Secchi:	
	60.3	SUN		6.0
	60.1	MON		6.0
	59.4	TUES		6.0
	59.0	WED		6.0
	58.7	THUR		6.0
	58.4	FRI		6.0
	58.4	SAT		6.0
AVG:	59.2	AVG:		6.0

The Dalles Dam Daily Readings and Averages for Temperatures, Secchi, Entrances, and Spill

North Fish Ladder			East Fish Ladder												% Spill
North Entrance		East Entrance						West Entrance				South Entrance			
Date:	Differential	N1 Depth	Differential	E1Depth	E2 Depth	E3 Depth	JP 6	Differential	W1Depth	W2 Depth	W3 Depth	Differential	S1 Depth	S2 Depth	
10/23/11	1.4	9.7	1.4	6.0	11.5	11.5	9.3	1.4	8.2	8.2	Closed	1.3	8.3	8.3	O N S E A L
10/23/11	1.4	9.7	1.3	6.1	11.4	11.4	9.2	1.4	8.2	8.1		1.2	8.4	8.4	
10/23/11			1.3	7.9	11.4	11.4		1.3	8.3	8.3		1.3	8.3	8.3	
10/24/11	1.4	9.7	1.7	5.9	11.6	11.1	10	1.4	8.1	8.1		1.4	8.3	8.3	
10/24/11	1.2	9.6	1.7	6.1	11.5	11.6	10.1	1.5	8.1	8.3		1.3	8.4	8.4	
10/24/11			1.3	6.1	11.6	11.5		1.2	8.3	8.2		1.1	8.5	8.4	
10/25/11	1.2	9.8	1.2	9.9	12.0	12.1	11	1.2	9.0	9.0		1.4	8.3	8.3	
10/25/11	1.2	9.8	1.1	10.1	12.1	12.0	11.1	1.3	9.0	9.0		1.4	8.2	8.2	
10/25/11			1.7	6.1	11.6	11.5		1.5	8.3	8.2		1.4	8.2	8.2	
10/26/11	1.0	9.6	1.3	2.1	10.5	10.5	7.3	1.1	8.1	8.1		1.2	8.3	8.2	
10/26/11	1.2	9.4	1.2	9.8	10.6	11.1	7.4	1.1	8.2	8.2		1.0	8.4	8.3	
10/26/11			1.5	8.0	11.0	11.0		1.0	8.6	8.5		1.2	8.4	8.4	
10/27/11	1.2	9.7	1.9	2.0	10.4	10.5	8.6	1.4	8.2	8.1		1.3	8.3	8.3	
10/27/11	1.2	9.6	1.5	4.9	10.4	10.4	7.7	1.0	8.6	8.5		1.2	8.2	8.2	
10/27/11			1.4	2.0	10.6	10.5		1.2	8.1	8.2		1.3	8.3	8.3	
10/28/11	1.3	9.6	1.4	7.1	11.5	11.5	11.2	1.4	8.5	8.5		1.4	8.4	8.3	
10/28/11	1.2	9.7	1.6	6.9	11.4	11.4	10.4	1.4	8.5	8.4		1.3	8.3	8.4	
10/28/11			1.7	6.9	11.4	11.3		1.6	8.4	8.4		1.6	8.2	8.3	
10/29/11	1.2	9.7	1.4	7.1	11.5	11.5	10.2	1.2	8.7	8.6		1.2	8.5	8.5	
10/29/11	1.2	9.7	1.6	7.0	11.4	11.4	10.1	1.2	8.5	8.6		1.2	8.4	8.3	
10/29/11			1.5	7.0	11.6	11.6		1.3	8.6	8.5	1.3	8.4	8.4		
<b>AVG:</b>	1.2	9.7	1.5	6.4	11.3	11.3	9.5	1.3	8.4	8.4	Closed	1.3	8.3	8.3	
Third fish way inspection for east fish ladder, east, west, and south entrances completed via automation system in fisheries office.															



Resource crew planted new trees in westrick park. This will someday replace some of the dying trees in the background, which have been prime roosting location for overwintering bald eagles.